

Big Timber at Ridgecrest Drive

Hampshire, IL

Client

Lakewood Homes

Scope of Services

Hydrologic & Hydraulic Design

Route Survey

Vertical Alignment Analysis

Site Distance Study

Road Safety Analysis

Contract Plans

Preparation of EOPC

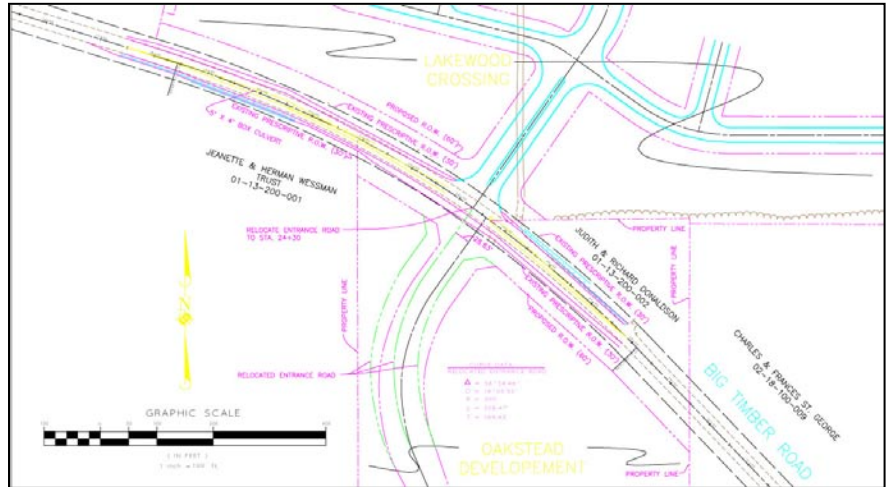
Project Duration

Constructed in 2007

Project Cost

Approx. \$700,000

(construction cost)



Manhard Consulting worked with the Kane County Division of Transportation and the Village of Hampshire to design and prepare contract plans for improvements to Big Timber Road. The improvements included 1,600 feet of roadway widening and resurfacing to provide turn lanes on Big Timber Road and new access to the north and south sides of Big Timber Road. The project included evaluating several different geometric alternatives due to right-of-way

restrictions and the curve of Big Timber Road.

Plan elements included hydrologic and hydraulic design, typical sections, plans and profile, erosion control, pavement marking, and cross sections. In-house services for the project included route survey, preparation of geometric alternatives, analysis of vertical alignment, super elevation and development, roadside safety analysis, sight distance study, traffic detour plan, preparation of contract plans and opinion of probable construction costs.