

# Darrell Road at School Entrance Drive

Island Lake, IL

## Client

Wauconda Community Unit  
School District 118

## Scope of Services

Route Survey  
Hydrologic & Hydraulic Design  
Geometric Alternatives

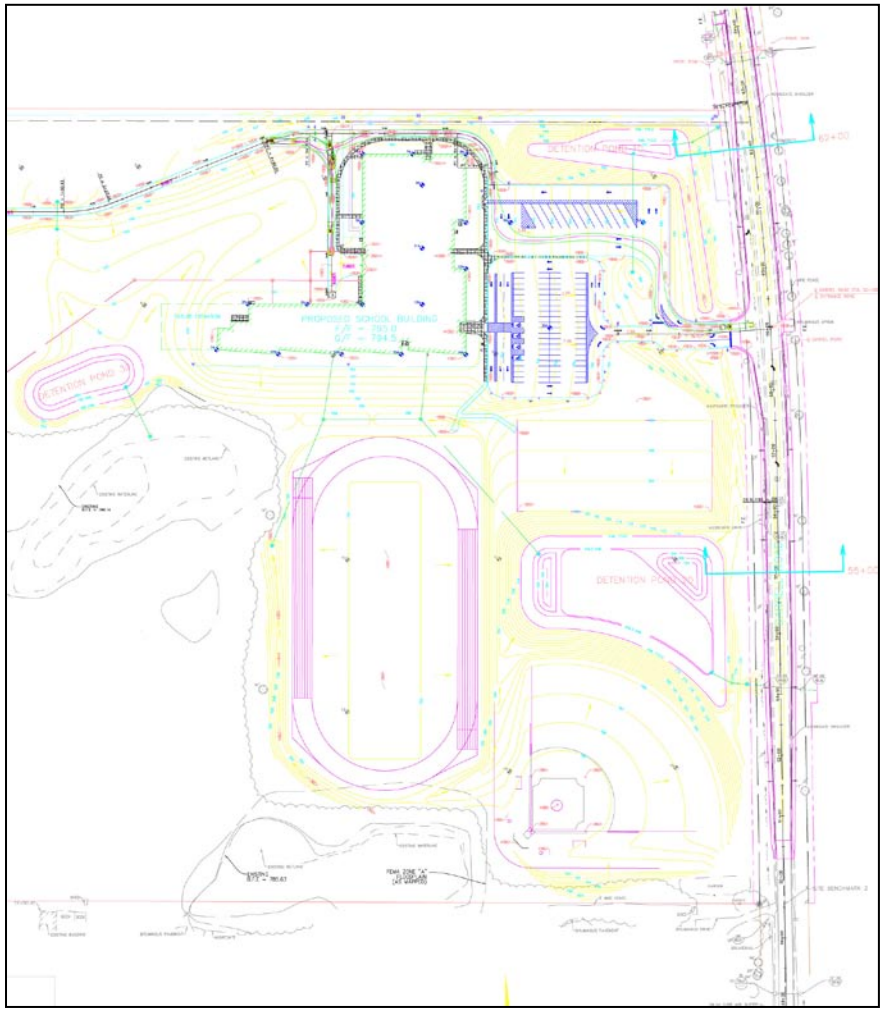
## Project Duration

Constructed in 2007

## Project Cost

Approx. \$420,000  
(construction cost)

Manhard Consulting worked with the Wauconda Community Unit School District 118 and the Lake County Division of Transportation on the preparation of construction plans and special provisions for 1,660 feet of roadway widening and resurfacing to provide a new access to Darrell Road. The improvements included providing turn lanes and deceleration lanes on Darrell Road and designing the improvement within the restricted right-of-way of Darrell Road.



Plan elements included typical sections, plans and profile, erosion and sediment control, pavement marking and cross sections. In-house services for the project included a route survey, preparation of geometric alternatives, analysis of vertical alignment, roadside safety analysis, sight distance study, drainage design, final design and preparation of contract plans and opinion of probable construction costs.