



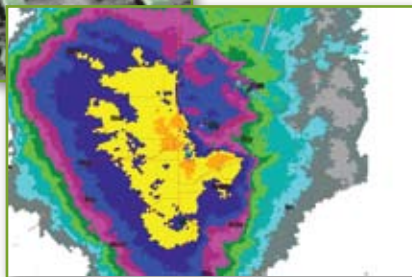
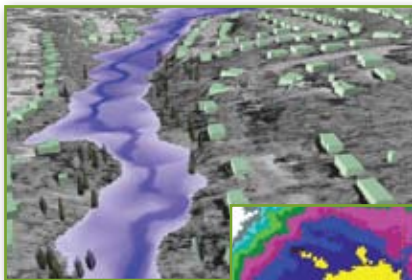
Let's Talk Stormwater

Manhard Consulting's nationally recognized water resources team specializes in advanced GIS-based surface water hydrologic and hydraulic modeling. Our experience with a wide range of modeling software and stormwater projects allows us to select the right model and methodology for your project resulting in better mapping and design.

With Manhard, you get a partner who has spent decades performing advanced hydrologic and hydraulic modeling with a focus on integrating GIS. Our goal is to provide accurate, cost-effective solutions to maximize your stormwater project without exceeding your budget.



Manhard Consulting has utilized gage adjusted NEXRAD data to perform model calibration using HEC-HMS, SWMM and GSSHA. Our experienced team has never subscribed to the "one model fits all" approach to any project.



Services

- Hydrologic and Hydraulic Modeling
- Stormwater Infrastructure Design
- Water Quality BMP Design
- Stormwater Master Planning
- GIS Services
- Ecological Permitting
- Flood Insurance Studies
- Watershed Management
- Stream and Wetland Restoration
- Sediment Transport Analysis
- Geomorphic Characterization
- Alluvial Fan Modeling

Visit manhard.com

Manhard Consulting provides a full line of civil engineering and surveying services to public- and private-sector clients. Please visit manhard.com today.